



BEACH

WALK

RESIDENCE II

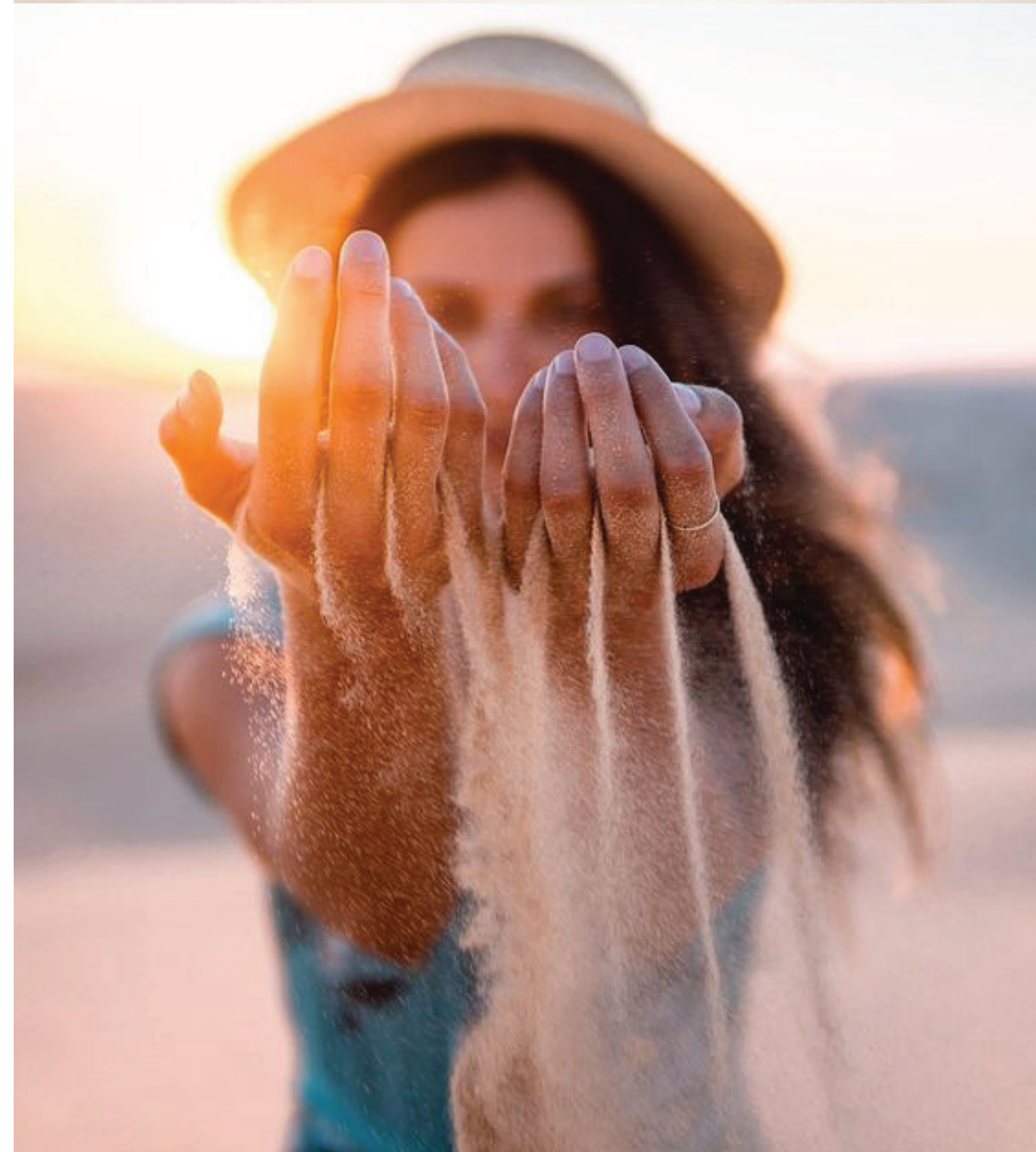
IMTIAZ



FOOTPRINTS
IN THE SAND,
MEMORIES IN
THE *making*

EVERYDAY RESORT *living*

Unveiling Beach Walk Residence II, a coveted address in Dubai Islands by Imtiaz Developments. This beachfront haven offers a vibrant island lifestyle with unparalleled amenities and breathtaking coastal vistas.



Imagine waking up to the gentle sound of waves, with the sun-kissed sands just a leisurely stroll away. This isn't a dream vacation; it's your everyday reality at Beach Walk Residence II, Imtiaz Developments' newest masterpiece on Dubai Islands. Perfectly positioned, Beach Walk Residence II offers a beachfront lifestyle just moments from the pristine shoreline. A world-class shopping destination sits directly opposite, ensuring convenience at your fingertips.





Inspired by the essence of resort living, our property boasts a harmonious blend of neutral colours featuring hints of turquoise and lavish gold touches. Each corner is crafted to transport you to a state of tranquility, where every day feels like a holiday.

Beach Walk Residence II is a haven that fosters a sense of belonging. Here, amidst only 80 residences, a vibrant community flourishes. Unwind in the verdant embrace of the zen garden, a sanctuary for quiet contemplation. Or, gather with kindred spirits by the cascading infinity pool, sharing stories beneath the endless expanse of the sky.







Dubai Islands reveals an exceptional vision aimed at redefining waterfront living. Spanning across five islands, this waterfront haven will showcase opulent resorts, pristine beaches, and vibrant cultural centers. Designed in alignment with Dubai's ambitious 2040 vision.

POINTS OF *interest*

Mall by Nakheel	2 min
Waterfront Market:	5 min
Hyatt Regency:	5 min
Nearest Metro Station:	8 min
Dubai Hospital:	8 min
Al Mamzar Beach:	8 min
Dubai International Airport:	10 min
The Elite English School:	12 min
Al Ghurair Centre:	12 min
Cruise Terminal:	15 min
La Mer Beach:	15 min
Jumeirah Mosque:	20 min
Jumeirah Public Beach:	20 min
Dubai Frame:	20 min
Downtown Dubai:	24 min
Dubai Mall:	24 min







LIVE LIFE ON ISLAND *time*


Beach Walk Residence II isn't just a place to live; it's a state of mind. It's a constant reminder to slow down, savour the moment, and embrace the beauty that surrounds you. But Beach Walk Residence II isn't just about aesthetics; it's a lifestyle. Experience unparalleled comfort with thoughtfully designed residences that cater to your every need. Whether you're seeking a serene sanctuary to call home or an investment opportunity in one of Dubai's most sought-after locations, Beach Walk offers the perfect balance of luxury and practicality.


DUBAI *islands*


Dubai Islands enjoys the unique geographical advantage of being close to the heart of the city yet far enough away to nourish its island soul. The islands are easily accessible from the mainland via road and sea and are within easy reach of Dubai's landmarks and popular neighbourhoods. The drive to the islands is made even more spectacular by the new Infinity Bridge that links the islands to the city.

 Breathtaking
Sunset Views

 9 Marinas

 21 KM
Beachfront

 86 Resorts &
Hotels

 2 Golf Courses





BEACH
WALK
RESIDENCE II

DISCOVER THE BEACH *walk*

Not everyone can claim the ocean breeze as their morning alarm. A beachfront residence at Beach Walk Residence II offers a unique privilege, allowing you to begin each day with the calming presence of the sea just steps from your door. Picture yourself lounging by the pool, soaking in the golden rays, or unwinding in the dreamy cabanas, diving into pristine pools, or basking on sunbeds – they are all elements of an idyllic escape, conveniently located within your private haven.



AMENITIES & facilities



FAMILY
SWIMMING POOL



ZEN
GARDEN



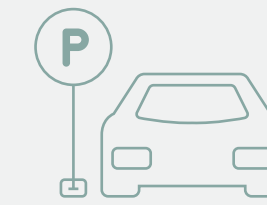
ADULT ONLY
ROOFTOP INFINITY POOL



BBQ
AREA



OUTDOOR
YOGA RETREAT



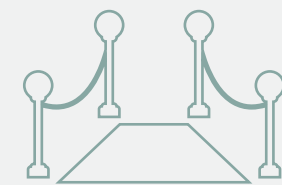
EXTRA VISITOR
PARKING



KIDS
PLAY AREA



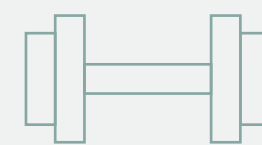
ROOFTOP
GARDEN



GRAND ENTRANCE WITH
MEET & GREET LOUNGE



CLUB
ROOM



FULLY
EQUIPPED GYM

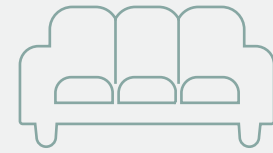
BRAND & features



5 MIN WALK
TO THE BEACH



OPPOSITE
THE MALL



FULLY FURNISHED
WITH CUSTOM FURNITURE



ELECTRIC VEHICLE
RECHARGE STATION

Miele

GISSI[®]


Villeroy & Boch
1748

alexa




IMTIAZ

MAIN LOBBY



MAIN LOBBY



LIVING ROOM



BEDROOM



LIVING & DINING



CLUB ROOM



IMTA
DEVELOPMENTS

CLUB ROOM



IMTIAZ
DEVELOPMENTS

Bröderna Lejonhjärta
OLD MAN and the SEA

CLUB ROOM

UNIT TYPES AND *sizes*



APARTMENTS

1 bedroom

2 bedrooms

3 bedrooms Duplex

NUMBER OF UNITS

25 units

34 units

4 units

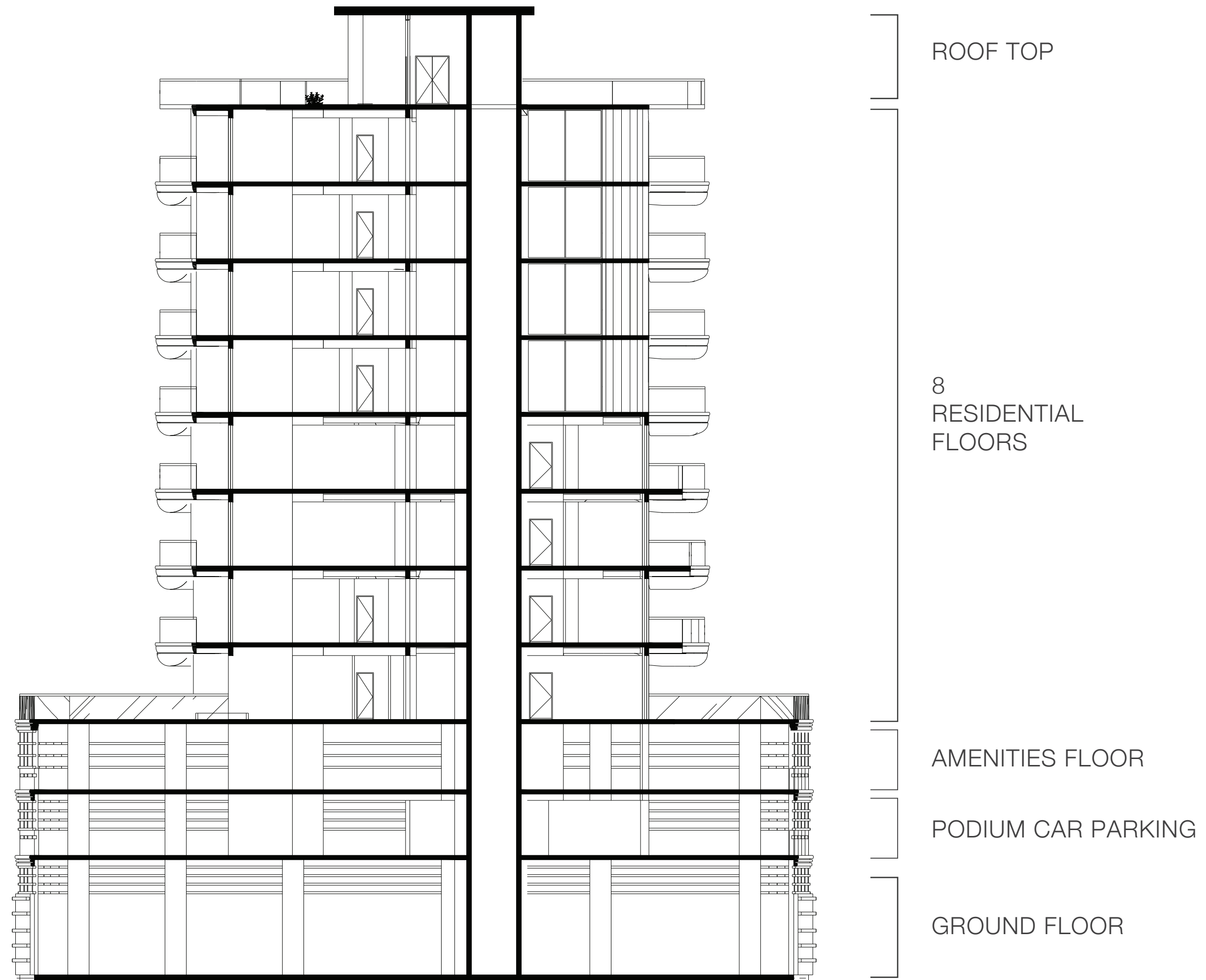
SIZE RANGE

755 sq.ft to 1100 sq.ft

1100 sq.ft to 1440 sq.ft

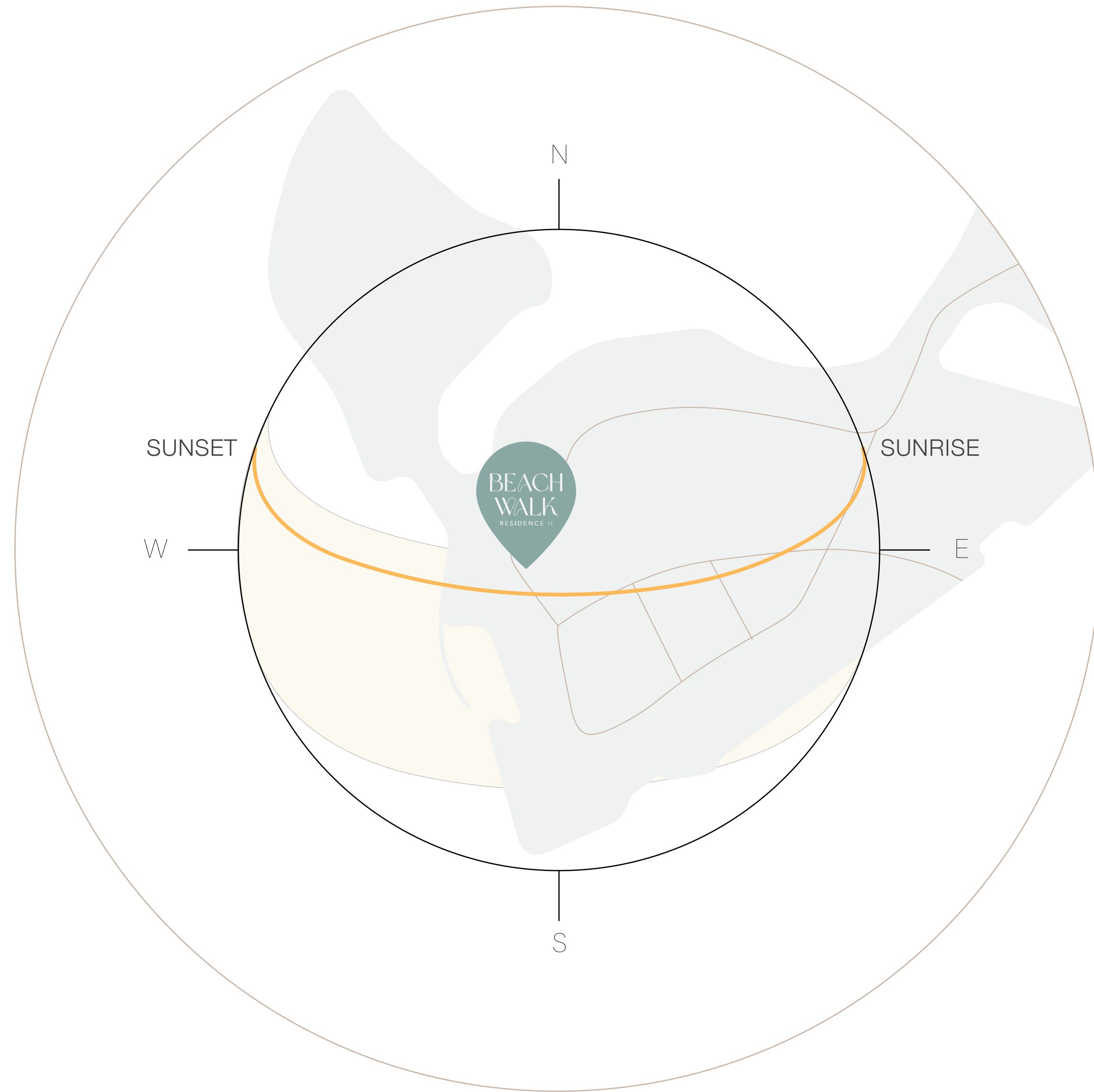
2500 sq.ft

BUILDING
configuration



G + PODIUM CAR PARKING + AMENITIES FLOOR + 8 RESIDENTIAL FLOORS

SUN & VIEWS *analysis*



PAYMENT *plan*

① 20% ON BOOKING	② 5% 15 TH OCTOBER 2024	③ 5% 15 TH JANUARY 2025
④ 10% 15 TH MAY 2025	⑤ 10% 15 TH SEPTEMBER 2025	⑥ 10% 15 TH DECEMBER 2025
⑦ 40% APRIL 2026 ON COMPLETION		

IMTIAZ

imtiaz.ae | info@imtiaz.ae

800 IMTIAZ (468429)